



# Test Report

No.T51510251171TC

Date: OCT 19, 2015

Page 1 of 11

DONGGUAN FUDE BINDING EQUIPMENT CO., LTD  
NO.118,THE FIRST DISTRICT OF CHANG TANG,  
DALANG TOWN,DONGGUAN CITY,G  
UANGDONG PROVINCE,CHINA

The following samples were submitted and identified by/on behalf of the client as:

PVC PLASTIC SPIRAL

Sample Receiving Date : OCT 16, 2015

Testing Period : OCT 16, 2015 TO OCT 19, 2015

Test Requested		Conclusion
1.	EN 71-3:2013 + A1:2014 – Safety of toys – Part 3 – Migration of certain elements on the tested specimen(s) (All conclusive testing)	PASS
2.	European Regulation (EC) No. 1907/2006 (REACH) Annex XVII and its amendments – Cadmium content on the tested specimen(s)	PASS
3.	European Regulation (EC) No. 1907/2006 (REACH) Annex XVII and its amendments – Phthalates content on the tested specimen(s)	PASS
4.	ASTM F963-11 - Standard Consumer Safety Specification on Toy Safety (Selected specimen(s) was/were tested as specified by the applicant, please refer to test result page(s) for details)	--
4.1	Heavy Elements content in paint or similar surface coating materials in submitted sample in accordance with ASTM F963-11 - Standard Consumer Safety Specification on Toy Safety, Clause 4.3.5.1	NOT APPLICABLE (SEE REMARK)
4.2	Heavy Elements content in substrate materials in submitted sample in accordance with ASTM F963-11 - Standard Consumer Safety Specification on Toy Safety, Clause 4.3.5.2	PASS
5.	CPSIA section 101 - Total Lead content on the tested specimen(s)	--
5.1	CPSIA section 101(f) (1) – Lead in paint/similar surface coating material	NOT APPLICABLE (SEE REMARK)
5.2	CPSIA section 101(a) (2) – Lead in accessible substrate materials (Including Children’s Metal Jewelry)	PASS



SGS Standards Technical Services Co., Ltd.  
Shenzhen Inspection Laboratory

Unless otherwise agreed in writing, this document is issued by the Company subject to its General Conditions of Service printed overleaf, available on request or accessible at <http://www.sgs.com/en/Terms-and-Conditions.aspx> and, for electronic format documents, subject to Terms and Conditions for Electronic Documents at <http://www.sgs.com/en/Terms-and-Conditions/Terms-e-Documents.aspx>. Attention is drawn to the limitation of liability, indemnification and jurisdiction issues defined therein. Any holder of this document is advised that information contained hereon reflects the Company's findings at the time of its intervention only and within the limits of Client's instructions, if any. The Company's sole responsibility is to its Client and this document does not exonerate parties to a transaction from exercising all their rights and obligations under the transaction documents. This document cannot be reproduced except in full, without prior written approval of the Company. Any unauthorized alteration, forgery or falsification of the content or appearance of this document is unlawful and offenders may be prosecuted to the fullest extent of the law. Unless otherwise stated the results shown in this test report refer only to the sample(s) tested and such sample(s) are retained for 30 days only.  
Attention: To check the authenticity of testing/inspection report & certificate, please contact us at telephone: (86-755) 8307 1443, or email: [CN.Doccheck@sgs.com](mailto:CN.Doccheck@sgs.com)  
SGS Bldg. No. 4, Jianghao Industrial Park, No. 430, Minhua Road, Banlian, Longgang District, Shenzhen, China 518129 t (86-755) 25328888 f (86-755) 83106190 www.sgs.com.cn  
中国·深圳·龙岗区坂田吉华路430号江灏工业园4栋SGS大楼 邮编: 518129 t (86-755) 25328888 f (86-755) 83106190 e [sgs.china@sgs.com](mailto:sgs.china@sgs.com)



**Test Report**

No.T51510251171TC

Date: OCT 19, 2015

Page 2 of 11

Test Requested		Conclusion
6.	CPSIA section 108 – Phthalates on the tested specimen(s)	PASS
7.	US California Proposition 65 (County of Los Angeles Case No. BC479596 ) – Lead Content on the tested specimen(s)	PASS
8.	US California Proposition 65 (County of Santa Clara Case No. 1-12-CV-230462) – Phthalates Content on the tested specimen(s)	PASS

Remark: There were no surface coating found in the said submitted sample.

\*\*\*\*\* FOR FURTHER DETAILS, PLEASE REFER TO THE FOLLOWING PAGE(S) \*\*\*\*\*

Signed for and on behalf of  
SGS-CSTC Standard Technical Services Co., Ltd.  
Shenzhen Branch-Toy laboratory

Feng Shaohong, Jessica  
Senior Technical Manager



SGS-CSTC Standard Technical Services Co., Ltd.  
Shenzhen Branch-Toy Laboratory

Unless otherwise agreed in writing, this document is issued by the Company subject to its General Conditions of Service printed overleaf, available on request or accessible at <http://www.sgs.com/en/Terms-and-Conditions.aspx> and, for electronic format documents, subject to Terms and Conditions for Electronic Documents at <http://www.sgs.com/en/Terms-and-Conditions/Terms-e-Documents.aspx>. Attention is drawn to the limitation of liability, indemnification and jurisdiction issues defined therein. Any holder of this document is advised that information contained hereon reflects the Company's findings at the time of its intervention only and within the limits of Client's instructions, if any. The Company's sole responsibility is to its Client and this document does not exonerate parties to a transaction from exercising all their rights and obligations under the transaction documents. This document cannot be reproduced except in full, without prior written approval of the Company. Any unauthorized alteration, forgery or falsification of the content or appearance of this document is unlawful and offenders may be prosecuted to the fullest extent of the law. Unless otherwise stated the results shown in this test report refer only to the sample(s) tested and such sample(s) are retained for 30 days only.  
Attention: To check the authenticity of testing /inspection report & certificate, please contact us at telephone: (86-755) 8307 1443, or email: [CN.Doccheck@sgs.com](mailto:CN.Doccheck@sgs.com)  
SGS Bldg. No. 4, Jianghao Industrial Park, No. 430, Minhua Road, Banlian, Longgang District, Shenzhen, China 518129 t (86-755) 25328888 f (86-755) 83106190 www.sgs.com.cn  
中国·深圳·龙岗区坂田吉华路430号江灏工业园4栋SGS大楼 邮编: 518129 t (86-755) 25328888 f (86-755) 83106190 e [sgs.china@sgs.com](mailto:sgs.china@sgs.com)

**Results:**

**1. EN 71-3:2013 + A1:2014 – Safety of toys – Part 3 – Migration of Certain Elements**

Category III: Scrapped-off toy material

Method: With reference to EN71-3:2013 + A1:2014. Analysis of general elements was performed by ICP-OES. Chromium (III) was obtained by calculation, chromium (VI) was analyzed by IC-UV/VIS and organic tin was analyzed by GC-MS.

Test Item(s)	Result(s)	MDL	Permissible Limit
<b>Specimen No.</b>	<b>1</b>	--	--
<b>Mass of trace amount</b> (mg)	--	--	--
Soluble Aluminium (Al) (mg/kg)	ND	50	70,000
Soluble Antimony (Sb) (mg/kg)	ND	10	560
Soluble Arsenic (As) (mg/kg)	ND	10	47
Soluble Barium (Ba) (mg/kg)	ND	50	18,750
Soluble Boron (B) (mg/kg)	ND	50	15,000
Soluble Cadmium (Cd) (mg/kg)	ND	5	17
Soluble Chromium (Cr) (mg/kg)	ND	0.15	--
Soluble Chromium <sup>#</sup> (III) (Cr (III)) (mg/kg)	ND	1	460
Soluble Chromium <sup>#</sup> (VI) (Cr (VI)) (mg/kg)	ND	0.12	0.2
Soluble Cobalt (Co) (mg/kg)	ND	10	130
Soluble Copper (Cu) (mg/kg)	ND	50	7,700
Soluble Lead (Pb) (mg/kg)	ND	10	160
Soluble Manganese (Mn) (mg/kg)	ND	50	15,000
Soluble Mercury (Hg) (mg/kg)	ND	10	94
Soluble Nickel (Ni) (mg/kg)	ND	10	930
Soluble Selenium (Se) (mg/kg)	ND	10	460
Soluble Strontium (Sr) (mg/kg)	ND	50	56,000
Soluble Tin (Sn) (mg/kg)	ND	3.3	180,000
Soluble Organic Tin <sup>^</sup> (mg/kg)	ND	--	12
Soluble Zinc (Zn) (mg/kg)	ND	50	46,000

**Specimen Description:**

1. Black plastic (Spiral)



SGS Standards Technical Services Co., Ltd.  
Shenzhen Inspection Laboratory

Unless otherwise agreed in writing, this document is issued by the Company subject to its General Conditions of Service printed overleaf, available on request or accessible at <http://www.sgs.com/en/Terms-and-Conditions.aspx> and, for electronic format documents, subject to Terms and Conditions for Electronic Documents at <http://www.sgs.com/en/Terms-and-Conditions/Terms-e-Documents.aspx>. Attention is drawn to the limitation of liability, indemnification and jurisdiction issues defined therein. Any holder of this document is advised that information contained hereon reflects the Company's findings at the time of its intervention only and within the limits of Client's instructions, if any. The Company's sole responsibility is to its Client and this document does not exonerate parties to a transaction from exercising all their rights and obligations under the transaction documents. This document cannot be reproduced except in full, without prior written approval of the Company. Any unauthorized alteration, forgery or falsification of the content or appearance of this document is unlawful and offenders may be prosecuted to the fullest extent of the law. Unless otherwise stated the results shown in this test report refer only to the sample(s) tested and such sample(s) are retained for 30 days only.  
Attention: To check the authenticity of testing /inspection report & certificate, please contact us at telephone: (86-755) 8307 1443, or email: CN.Doccheck@sgs.com  
SGS Bldg. No. 4, Jianghai Industrial Park, No. 430, Minhua Road, Banlian, Longgang District, Shenzhen, China 518129 t (86-755) 25328888 f (86-755) 83106190 www.sgs.com.cn  
中国·深圳·龙岗区坂田吉华路430号江灏工业园4栋SGS大楼 邮编: 518129 t (86-755) 25328888 f (86-755) 83106190 e sgs.china@sgs.com

- Note:
- mg/kg = milligram per kilogram
  - mg = milligram
  - ND = Not Detected (lower than MDL)
  - MDL = Method Detection Limit
  - 1% = 10000 mg/kg = 10000 ppm
  - # Confirmation test of soluble chromium (III) & chromium (VI) is not required in case of soluble chromium does not exceed their requirements as specified in EN71-3: 2013 + A1:2014.
  - ^ Confirmation test of soluble organic tin is not required in case of soluble tin, after conversion, does not exceed the soluble organic tin requirement as specified in EN71-3: 2013 + A1:2014.

**2. Regulation (EC) No. 1907/2006 (REACH), Annex XVII and its Amendments – Cadmium Content**

Method: With reference to EN1122: 2001 method B / IEC 62321: 2008

Analysis was performed by Inductively Coupled Plasma Optical Emission Spectrometer (ICP-OES) / Atomic Absorption Spectrometer (AAS)

For Plastic

Test Item(s)	Cadmium (Cd)		
Permissible Limit (mg/kg)	100		
Specimen Description	Alias No.	Tracing No.	Result(s) (mg/kg)
1. Transparent plastic (Spiral) + White plastic (Spiral) + Red plastic (Spiral)	2	1	ND

- Note:
- Requirement, Permissible and Reference Limit specified by Commission Regulation (EU) No 494/2011 amending Annex XVII of REACH Regulation (EC) No 1907/2006 (previously restricted under entry 23 of Regulation (EC) No 552/2009 and directive 91/338/EC).
  - mg/kg = milligram per kilogram
  - ND = Not Detected (lower than MDL)
  - MDL = Method Detection Limit = 5 mg/kg
  - 1% = 10000 mg/kg = 10000 ppm
  - The result(s) is (are) calculated using the minimum specimen weight for composite test.



SGS Standards Technical Services Co., Ltd.  
Shenzhen Inspection Laboratory

Unless otherwise agreed in writing, this document is issued by the Company subject to its General Conditions of Service printed overleaf, available on request or accessible at <http://www.sgs.com/en/Terms-and-Conditions.aspx> and, for electronic format documents, subject to Terms and Conditions for Electronic Documents at <http://www.sgs.com/en/Terms-and-Conditions/Terms-e-Documents.aspx>. Attention is drawn to the limitation of liability, indemnification and jurisdiction issues defined therein. Any holder of this document is advised that information contained hereon reflects the Company's findings at the time of its intervention only and within the limits of Client's instructions, if any. The Company's sole responsibility is to its Client and this document does not exonerate parties to a transaction from exercising all their rights and obligations under the transaction documents. This document cannot be reproduced except in full, without prior written approval of the Company. Any unauthorized alteration, forgery or falsification of the content or appearance of this document is unlawful and offenders may be prosecuted to the fullest extent of the law. Unless otherwise stated the results shown in this test report refer only to the sample(s) tested and such sample(s) are retained for 30 days only.  
Attention: To check the authenticity of testing / inspection report & certificate, please contact us at telephone: (86-755) 8307 1443, or email: [CN.Doccheck@sgs.com](mailto:CN.Doccheck@sgs.com)  
SGS Bldg. No. 4, Jianghai Industrial Park, No. 430, Minhua Road, Banlian, Longgang District, Shenzhen, China 518129 t (86-755) 25328888 f (86-755) 83106190 www.sgs.com.cn  
中国·深圳·龙岗区坂田吉华路430号江灏工业园4栋SGS大楼 邮编: 518129 t (86-755) 25328888 f (86-755) 83106190 e [sgs.china@sgs.com](mailto:sgs.china@sgs.com)

**3. European Regulation (EC) No. 1907/2006 (REACH) Annex XVII and its amendments – Phthalate content**

Method: With reference to CPSC-CH-C1001-09.3

Analysis was performed by Gas Chromatography Mass Spectrometer (GC-MS)

Materials can be placed in the Mouth

Test Item(s)	CAS No.	Result (s) (%)	MDL (%)	Permissible Limit (%)
Alias No.	--	3		
Tracing No.	--	1		
Specimen No.	--	1		
Dibutyl Phthalate (DBP)	84-74-2	ND	0.003	--
Benzylbutyl Phthalate (BBP)	85-68-7	ND	0.003	--
Bis-(2-ethylhexyl) Phthalate (DEHP)	117-81-7	ND	0.003	--
Diisononyl Phthalate (DINP)	28553-12-0 68515-48-0	ND	0.010	--
Di-n-octyl Phthalate (DNOP)	117-84-0	ND	0.003	--
Diisodecyl Phthalate (DIDP)	26761-40-0 68515-49-1	ND	0.010	--
Total (DBP+BBP+DEHP)		ND	--	0.1
Total (DINP+DNOP+DIDP)		ND	--	0.1

Specimen Description:

1. Transparent plastic (Spiral) + White plastic (Spiral) + Red plastic (Spiral)

- Note:
- ND = Not Detected (lower than MDL)
  - MDL = Method Detection Limit
  - % = percentage by weight
  - Results shown as ND are ignored in the sum calculation
  - The result(s) is (are) calculated using the total specimen weight for composite test


 SGS Standards Technical Services Co., Ltd.  
 Shenzhen Inspection Laboratory

Unless otherwise agreed in writing, this document is issued by the Company subject to its General Conditions of Service printed overleaf, available on request or accessible at <http://www.sgs.com/en/Terms-and-Conditions.aspx> and, for electronic format documents, subject to Terms and Conditions for Electronic Documents at <http://www.sgs.com/en/Terms-and-Conditions/Terms-e-Documents.aspx>. Attention is drawn to the limitation of liability, indemnification and jurisdiction issues defined therein. Any holder of this document is advised that information contained hereon reflects the Company's findings at the time of its intervention only and within the limits of Client's instructions, if any. The Company's sole responsibility is to its Client and this document does not exonerate parties to a transaction from exercising all their rights and obligations under the transaction documents. This document cannot be reproduced except in full, without prior written approval of the Company. Any unauthorized alteration, forgery or falsification of the content or appearance of this document is unlawful and offenders may be prosecuted to the fullest extent of the law. Unless otherwise stated the results shown in this test report refer only to the sample(s) tested and such sample(s) are retained for 30 days only.

Attention: To check the authenticity of testing/inspection report & certificate, please contact us at telephone: (86-755) 8307 1443, or email: [CN.Doccheck@sgs.com](mailto:CN.Doccheck@sgs.com)

SGS Bldg, No. 4, Jianghe Industrial Park, No. 430, Minhua Road, Banlan, Longgang District, Shenzhen, China 518129 t (86-755) 25328888 f (86-755) 83106190 www.sgs.com.cn  
 中国·深圳·龙岗区坂田吉华路430号江灏工业园4栋SGS大楼 邮编: 518129 t (86-755) 25328888 f (86-755) 83106190 e [sgs.china@sgs.com](mailto:sgs.china@sgs.com)

**4.2 ASTM F963-11, Clause 4.3.5.2 – Heavy Elements in Substrate Materials**

Method (non-metallic materials): With reference to CPSC-CH-E1002-08.1

Method: With reference to ASTM F963-11 Clause 8.3

Analysis was performed by Inductively Coupled Plasma Optical Emission Spectrometer (ICP-OES)

Total Lead Content

Test Item(s)	Lead (Pb)		
MDL (ppm)	10		
Total Limit (ppm)	100		
Specimen Description	Alias No.	Tracing No.	Result(s) (ppm)
1. Transparent plastic (Spiral) + White plastic (Spiral) + Red plastic (Spiral)	4	1	ND

Soluble Heavy Metal Content

Test Item(s)	Pb	Sb	As	Ba	Cd	Cr	Hg	Se			
MDL (ppm)	5	5	2.5	10	5	5	5	10			
Migration Limit (ppm) -- Other Than Modeling Clays	90	60	25	1000	75	60	60	500			
Migration Limit (ppm) -- Modeling Clays	90	60	25	250	50	25	25	500			
Specimen No.	Alias No.	Tracing No.	Mass of trace amount (mg)	Adjusted Migration Result(s) (ppm)							
1	5	1	/	ND	ND	ND	ND	ND	ND	ND	ND

Specimen Description:

1. Black plastic (Spiral)



SGS Standards Technical Services Co., Ltd.  
Shenzhen Inspection Laboratory

Unless otherwise agreed in writing, this document is issued by the Company subject to its General Conditions of Service printed overleaf, available on request or accessible at <http://www.sgs.com/en/Terms-and-Conditions.aspx> and, for electronic format documents, subject to Terms and Conditions for Electronic Documents at <http://www.sgs.com/en/Terms-and-Conditions/Terms-e-Documents.aspx>. Attention is drawn to the limitation of liability, indemnification and jurisdiction issues defined therein. Any holder of this document is advised that information contained hereon reflects the Company's findings at the time of its intervention only and within the limits of Client's instructions, if any. The Company's sole responsibility is to its Client and this document does not exonerate parties to a transaction from exercising all their rights and obligations under the transaction documents. This document cannot be reproduced except in full, without prior written approval of the Company. Any unauthorized alteration, forgery or falsification of the content or appearance of this document is unlawful and offenders may be prosecuted to the fullest extent of the law. Unless otherwise stated the results shown in this test report refer only to the sample(s) tested and such sample(s) are retained for 30 days only.  
Attention: To check the authenticity of testing /inspection report & certificate, please contact us at telephone: (86-755) 8307 1443, or email: CN.Doccheck@sgs.com  
SGS Bldg. No. 4, Jianghai Industrial Park, No. 430, Minhua Road, Banlian, Longgang District, Shenzhen, China 518129 t (86-755) 25328888 f (86-755) 83106190 www.sgs.com.cn  
中国·深圳·龙岗区坂田吉华路430号江灏工业园4栋SGS大楼 邮编: 518129 t (86-755) 25328888 f (86-755) 83106190 e sgs.china@sgs.com

- Note:
- ppm = parts per million
  - 1% = 10000 mg/kg = 10000 ppm = 10000 µg/g
  - MDL = Method Detection Limit
  - ND = Not Detected (lower than MDL)
  - Migration results of eight elements shown are of the adjusted analytical results
  - The result(s) is (are) calculated using the minimum specimen weight for composite test.

**5.2 CPSIA - Lead in Accessible Substrate Materials**

Method (non-metallic materials): With reference to CPSC-CH-E1002-08.1 - Standard Operation Procedure for Determining Total Lead (Pb) in Non-Metal Children Product

Test Item(s)	Lead (Pb)		
Permissible Limit **(ppm)	100		
Specimen Description	Alias No.	Tracing No.	Result(s) (ppm)
1. Transparent plastic (Spiral) + White plastic (Spiral) + Red plastic (Spiral)	6	1	ND

\*\* Permissible Limit applies to a children's product manufactured after 14 August 2011 (Public Law 110-314 (Consumer Product Safety Improvement Act of 2008) and its Amendments Public Law 112-28)

- Note:
- ppm = parts per million
  - ND = Not Detected (lower than MDL)
  - MDL = Method Detection Limit = 10 ppm
  - 1% = 10000 mg/kg = 10000 ppm
  - The result(s) is (are) calculated using the minimum specimen weight for composite test.



SGS Standards Technical Services Co., Ltd.  
Shenzhen Inspection Laboratory

Unless otherwise agreed in writing, this document is issued by the Company subject to its General Conditions of Service printed overleaf, available on request or accessible at <http://www.sgs.com/en/Terms-and-Conditions.aspx> and, for electronic format documents, subject to Terms and Conditions for Electronic Documents at <http://www.sgs.com/en/Terms-and-Conditions/Terms-e-Documents.aspx>. Attention is drawn to the limitation of liability, indemnification and jurisdiction issues defined therein. Any holder of this document is advised that information contained hereon reflects the Company's findings at the time of its intervention only and within the limits of Client's instructions, if any. The Company's sole responsibility is to its Client and this document does not exonerate parties to a transaction from exercising all their rights and obligations under the transaction documents. This document cannot be reproduced except in full, without prior written approval of the Company. Any unauthorized alteration, forgery or falsification of the content or appearance of this document is unlawful and offenders may be prosecuted to the fullest extent of the law. Unless otherwise stated the results shown in this test report refer only to the sample(s) tested and such sample(s) are retained for 30 days only.  
Attention: To check the authenticity of testing /inspection report & certificate, please contact us at telephone: (86-755) 8307 1443, or email: [CN.Doccheck@sgs.com](mailto:CN.Doccheck@sgs.com)  
SGS Bldg. No. 4, Jianghe Industrial Park, No. 430, Minhua Road, Banlian, Longgang District, Shenzhen, China 518129 t (86-755) 25328888 f (86-755) 83106190 www.sgs.com.cn  
中国·深圳·龙岗区坂田吉华路430号江灏工业园4栋SGS大楼 邮编: 518129 t (86-755) 25328888 f (86-755) 83106190 e [sgs.china@sgs.com](mailto:sgs.china@sgs.com)

**6. CPSIA – Phthalates Content**

Method: With reference to CPSC-CH-C1001-09.3

Analysis was performed by Gas Chromatography Mass Spectrometer (GC-MS)

Accessible Materials can be placed in the Mouth

Test Item(s)	CAS No.	Result (s) (%)	MDL (%)	Permissible Limit (%)
Alias No.	--	7		
Tracing No.	--	1		
Specimen No.	--	1		
Dibutyl Phthalate (DBP)	84-74-2	ND	0.003	0.1
Benzylbutyl Phthalate (BBP)	85-68-7	ND	0.003	0.1
Bis-(2-ethylhexyl) Phthalate (DEHP)	117-81-7	ND	0.003	0.1
Diisononyl Phthalate (DINP)	28553-12-0 68515-48-0	ND	0.010	0.1
Di-n-octyl Phthalate (DNOP)	117-84-0	ND	0.003	0.1
Diisodecyl Phthalate (DIDP)	26761-40-0 68515-49-1	ND	0.010	0.1

Specimen Description:

1. Transparent plastic (Spiral) + White plastic (Spiral) + Red plastic (Spiral)

- Note:
- % = percentage by weight
  - ND = Not Detected (lower than MDL)
  - MDL = Method Detection Limit
  - 1% = 10000 mg/kg = 10000 ppm
  - The result(s) is (are) calculated using the total specimen weight for composite test.



SGS Standards Technical Services Co., Ltd.  
Shenzhen Inspection Laboratory

Unless otherwise agreed in writing, this document is issued by the Company subject to its General Conditions of Service printed overleaf, available on request or accessible at <http://www.sgs.com/en/Terms-and-Conditions.aspx> and, for electronic format documents, subject to Terms and Conditions for Electronic Documents at <http://www.sgs.com/en/Terms-and-Conditions/Terms-e-Documents.aspx>. Attention is drawn to the limitation of liability, indemnification and jurisdiction issues defined therein. Any holder of this document is advised that information contained hereon reflects the Company's findings at the time of its intervention only and within the limits of Client's instructions, if any. The Company's sole responsibility is to its Client and this document does not exonerate parties to a transaction from exercising all their rights and obligations under the transaction documents. This document cannot be reproduced except in full, without prior written approval of the Company. Any unauthorized alteration, forgery or falsification of the content or appearance of this document is unlawful and offenders may be prosecuted to the fullest extent of the law. Unless otherwise stated the results shown in this test report refer only to the sample(s) tested and such sample(s) are retained for 30 days only.  
Attention: To check the authenticity of testing/inspection report & certificate, please contact us at telephone: (86-755) 8307 1443, or email: CN.Doccheck@sgs.com  
SGS Bldg. No. 4, Jianghe Industrial Park, No. 430, Minhua Road, Banlian, Longgang District, Shenzhen, China 518129 t (86-755) 25328888 f (86-755) 83106190 www.sgs.com.cn  
中国·深圳·龙岗区坂田吉华路430号江灏工业园4栋SGS大楼 邮编: 518129 t (86-755) 25328888 f (86-755) 83106190 e sgs.china@sgs.com



**7. US California Proposition 65 – Total Lead Content**

Method (non-metallic materials): With reference to CPSC-CH-E1002-08.1 - Standard Operation Procedure for Determining Total Lead (Pb) in Non-Metal Children Product

Analysis was performed by Inductively Coupled Plasma Optical Emission Spectrometer (ICP-OES)

Test Item(s)			Lead (Pb)
Specimen Description	Alias No.	Tracing No.	Result(s) (ppm)
1. Transparent plastic (Spiral) + White plastic (Spiral) + Red plastic (Spiral)	8	1	ND

- Note:
- ppm = parts per million
  - ND = Not Detected (lower than MDL)
  - MDL = Method Detection Limit =10 ppm
  - 1% = 10000mg/kg=10000ppm
  - The result(s) is (are) calculated using the minimum specimen weight for composite test.

**Remark: Summary of permissible limit(s) of Lead requirement:**

Requirement(s)	Permissible Limit of Lead (ppm)	Effective Date
California Proposition 65 (County of Los Angeles Case No. BC479596 )	100	Current



SGS Standards Technical Services Co., Ltd.  
Shenzhen Inspection Laboratory

Unless otherwise agreed in writing, this document is issued by the Company subject to its General Conditions of Service printed overleaf, available on request or accessible at <http://www.sgs.com/en/Terms-and-Conditions.aspx> and, for electronic format documents, subject to Terms and Conditions for Electronic Documents at <http://www.sgs.com/en/Terms-and-Conditions/Terms-e-Documents.aspx>. Attention is drawn to the limitation of liability, indemnification and jurisdiction issues defined therein. Any holder of this document is advised that information contained hereon reflects the Company's findings at the time of its intervention only and within the limits of Client's instructions, if any. The Company's sole responsibility is to its Client and this document does not exonerate parties to a transaction from exercising all their rights and obligations under the transaction documents. This document cannot be reproduced except in full, without prior written approval of the Company. Any unauthorized alteration, forgery or falsification of the content or appearance of this document is unlawful and offenders may be prosecuted to the fullest extent of the law. Unless otherwise stated the results shown in this test report refer only to the sample(s) tested and such sample(s) are retained for 30 days only.  
Attention: To check the authenticity of testing /inspection report & certificate, please contact us at telephone: (86-755) 8307 1443, or email: CN.Doccheck@sgs.com  
SGS Bldg. No. 4, Jianghai Industrial Park, No. 430, Minhua Road, Banlian, Longgang District, Shenzhen, China 518129 t (86-755) 25328888 f (86-755) 83106190 www.sgs.com.cn  
中国·深圳·龙岗区坂田吉华路430号江灏工业园4栋SGS大楼 邮编: 518129 t (86-755) 25328888 f (86-755) 83106190 e sgs.china@sgs.com

**8. California Prop 65 Phthalates Content**

Method: With reference to CPSC-CH-C1001-09.3

Analysis was performed by Gas Chromatography Mass Spectrometer (GC-MS)

Test Item(s)	CAS No.	Result(s) (%)	
<b>Specimen No.</b>	--	<b>1</b>	<b>MDL (%)</b>
<b>Alias No.</b>	--	9	
<b>Tracing No.</b>	--	1	
Dibutyl phthalate (DBP)	84-74-2	ND	0.003
Benzyl butyl phthalate (BBP)	85-68-7	ND	0.003
Bis-(2-ethylhexyl) phthalate (DEHP)	117-81-7	ND	0.003

Specimen Description:

1. Transparent plastic (Spiral) + White plastic (Spiral) + Red plastic (Spiral)

- Note:
- % = percentage by weight
  - MDL = Method Detection Limit
  - ND = Not Detected (lower than MDL)
  - 1% = 10000 mg/kg = 10000 ppm
  - The result(s) is (are) calculated using the total specimen weight for composite test.



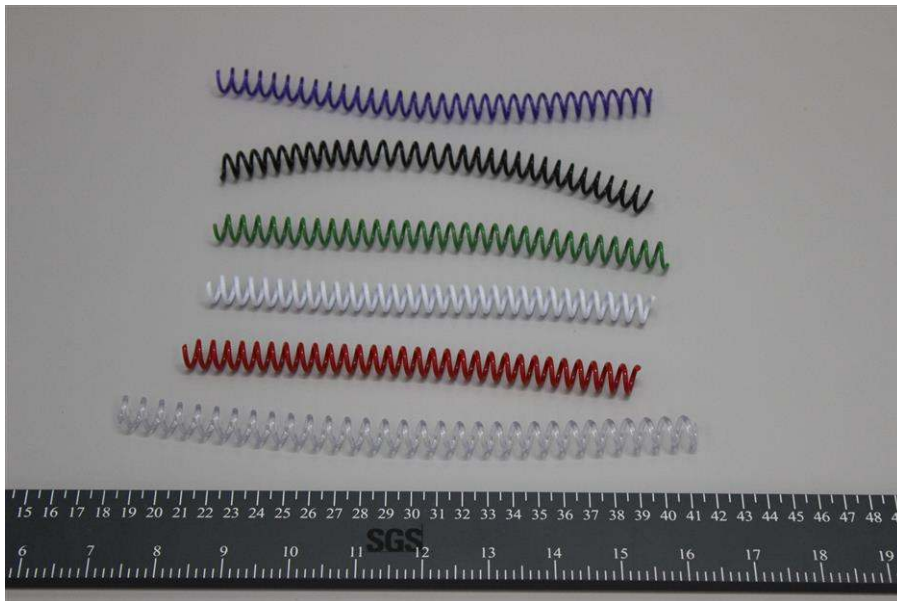
SGS Standards Technical Services Co., Ltd.  
Shenzhen Inspection Laboratory

Unless otherwise agreed in writing, this document is issued by the Company subject to its General Conditions of Service printed overleaf, available on request or accessible at <http://www.sgs.com/en/Terms-and-Conditions.aspx> and, for electronic format documents, subject to Terms and Conditions for Electronic Documents at <http://www.sgs.com/en/Terms-and-Conditions/Terms-e-Documents.aspx>. Attention is drawn to the limitation of liability, indemnification and jurisdiction issues defined therein. Any holder of this document is advised that information contained hereon reflects the Company's findings at the time of its intervention only and within the limits of Client's instructions, if any. The Company's sole responsibility is to its Client and this document does not exonerate parties to a transaction from exercising all their rights and obligations under the transaction documents. This document cannot be reproduced except in full, without prior written approval of the Company. Any unauthorized alteration, forgery or falsification of the content or appearance of this document is unlawful and offenders may be prosecuted to the fullest extent of the law. Unless otherwise stated the results shown in this test report refer only to the sample(s) tested and such sample(s) are retained for 30 days only.  
Attention: To check the authenticity of testing /inspection report & certificate, please contact us at telephone: (86-755) 8307 1443, or email: CN.Doccheck@sgs.com  
SGS Bldg. No. 4, Jianghai Industrial Park, No. 430, Minhua Road, Banlian, Longgang District, Shenzhen, China 518129 t (86-755) 25328888 f (86-755) 83106190 www.sgs.com.cn  
中国·深圳·龙岗区坂田吉华路430号江灏工业园4栋SGS大楼 邮编: 518129 t (86-755) 25328888 f (86-755) 83106190 e sgs.china@sgs.com

### Summary of Permissible Limit of Requirement(s):

Requirement(s)	Permissible Limit
California Proposition 65 (County of Santa Clara Case No. 1-12-CV-230462)	
<ul style="list-style-type: none"> <li>- 1.1 Automobile accessories including dashboard-related items</li> <li>- 1.2 Watches,</li> <li>- 1.3 Clocks</li> <li>- 1.4 Bags and Purses/wallets</li> <li>- 1.5 Ear plugs, buds and related accessories</li> <li>- 1.6 Temporary tattoos,</li> <li>- 1.7 Charms</li> <li>- 1.8 Plastic figures, small novelties and stationery-related items/sundries</li> <li>- 1.9 Bathroom accessories</li> <li>- 1.10 Bath/kitchen floor and door/welcome mats</li> <li>- 1.11 Bandage</li> </ul>	<p>&lt; 0.1% DEHP, BBP, DBP( For 1.1 to 1.10) &lt; 0.1% DEHP (For 1.11)</p>

### Sample Photo:



SGS authenticate the photo on original report only

\*\*\* End of Report \*\*\*



SGS Standards Technical Services Co., Ltd.  
Shenzhen Inspection Laboratory

Unless otherwise agreed in writing, this document is issued by the Company subject to its General Conditions of Service printed overleaf, available on request or accessible at <http://www.sgs.com/en/Terms-and-Conditions.aspx> and, for electronic format documents, subject to Terms and Conditions for Electronic Documents at <http://www.sgs.com/en/Terms-and-Conditions/Terms-e-Documents.aspx>. Attention is drawn to the limitation of liability, indemnification and jurisdiction issues defined therein. Any holder of this document is advised that information contained hereon reflects the Company's findings at the time of its intervention only and within the limits of Client's instructions, if any. The Company's sole responsibility is to its Client and this document does not exonerate parties to a transaction from exercising all their rights and obligations under the transaction documents. This document cannot be reproduced except in full, without prior written approval of the Company. Any unauthorized alteration, forgery or falsification of the content or appearance of this document is unlawful and offenders may be prosecuted to the fullest extent of the law. Unless otherwise stated the results shown in this test report refer only to the sample(s) tested and such sample(s) are retained for 30 days only.  
Attention: To check the authenticity of testing/inspection report & certificate, please contact us at telephone: (86-755) 8307 1443, or email: CN.Doccheck@sgs.com  
SGS Bldg. No. 4, Jianghao Industrial Park, No. 430, Ahua Road, Banlan, Longgang District, Shenzhen, China 518129 t (86-755) 25328888 f (86-755) 83106190 www.sgs.com.cn  
中国·深圳·龙岗区坂田吉华路430号江灏工业园4栋SGS大楼 邮编: 518129 t (86-755) 25328888 f (86-755) 83106190 e sgs.china@sgs.com